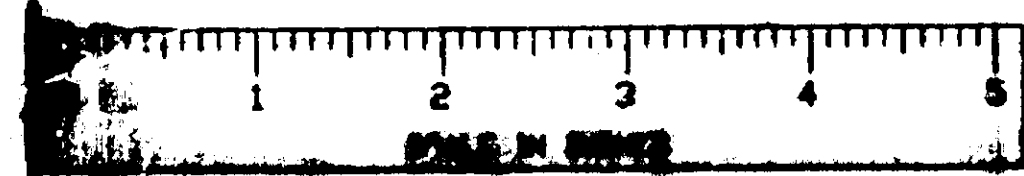


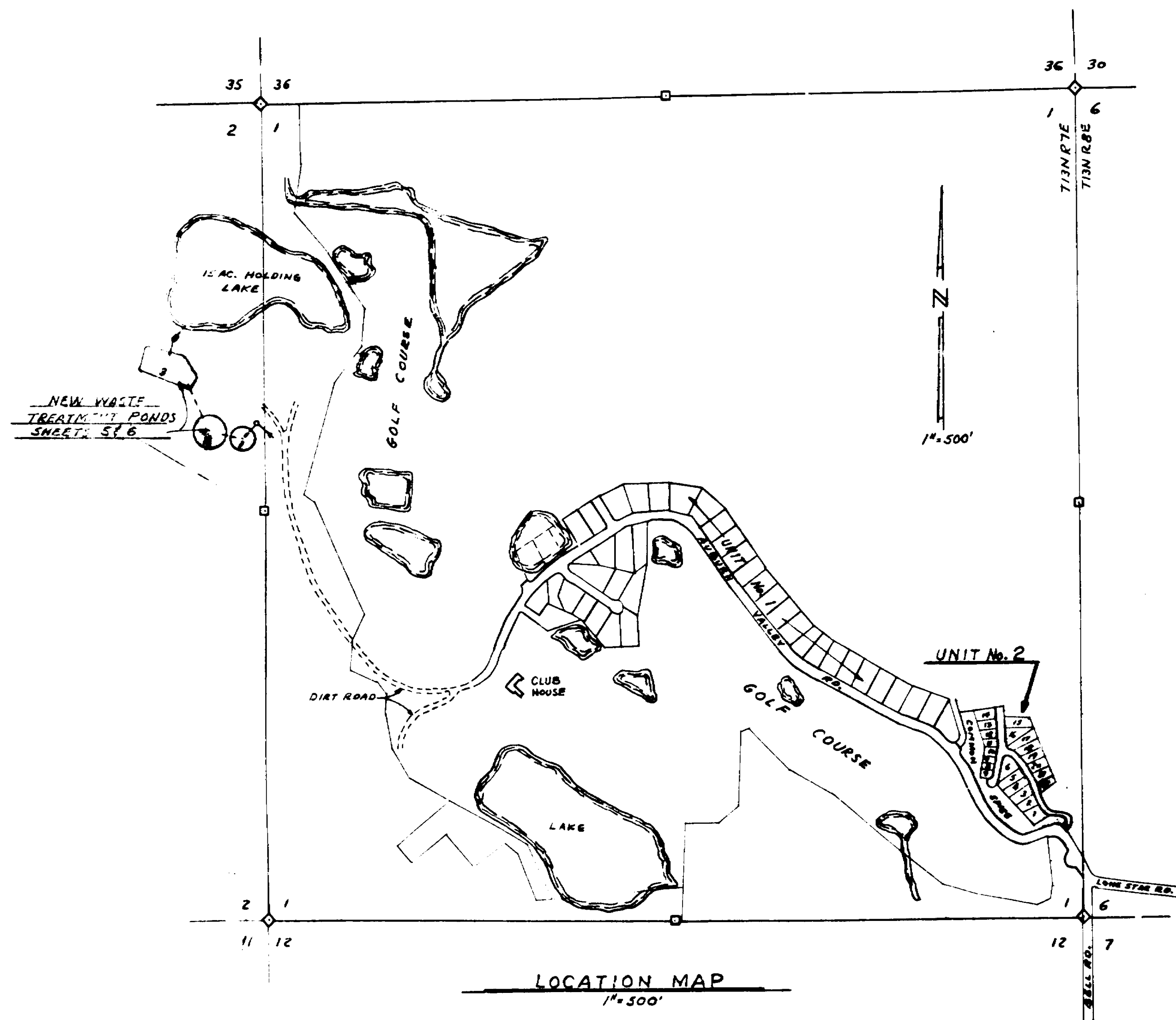
A-15-36

Auburn Valley 2



# IMPROVEMENT PLANS AUBURN VALLEY SUBDIVISION UNIT No. 2

C-2-2A



- DRAWING INDEX
- | DWG. No. | TITLE   |
|----------|---|
| 1        | ROADS & WATER LINES - PLAN & PROFILE          |
| 2        | SEWER PLAN                                    |
| 3        | CONSTRUCTION DETAILS                          |
| 4        | WATER PUMP STATION                            |
| 5        | WASTE DISPOSAL PLANT EXPANSION - GENERAL PLAN |
| 6        | WASTE DISPOSAL PLANT EXPANSION - DETAILS      |

SUBDIVIDER/DEVELOPER: **L. P. ODENTHAL**  
8800 AUBURN VALLEY RD.  
AUBURN, CALIF. 95603 Ph. 885-5567

WATER & SEWER COMPANY: **AUBURN VALLEY SERVICE CO.**  
8800 AUBURN VALLEY RD.  
AUBURN, CALIF. 95603 Ph. 885-4381

ENGINEER: **KENNETH M. ALLEN - ENGINEERS**  
8800 AUBURN VALLEY RD.  
AUBURN, CALIF. 95603 Ph. 885-4381

ELECTRICAL UTILITY: **PACIFIC GAS & ELECTRIC COMPANY**  
P.O. BOX 1188  
AUBURN, CALIF. 95603 Ph. 885-2431

TELEPHONE UTILITY: **THE PACIFIC TEL. & TEL. Co.**  
238 ELM AVE.  
AUBURN, CALIF. 95603 Ph. 885-2488

*L. P. Odenthal*  
\_\_\_\_\_  
REGISTERED PROFESSIONAL ENGINEER  
No. 10411  
PLACER COUNTY  
STATE OF CALIFORNIA  
EXPIRES 12/31/77

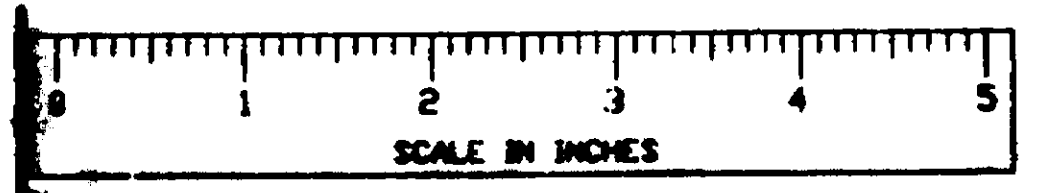
**INSTRUCTIONS TO CONTRACTORS**  
BEFORE COMMENCING WORK, ALL PLANS, SCHEDULES, AND PROGRAMS MUST BE SUBMITTED AND APPROVED IN CONFORMANCE WITH REQUIREMENTS OF SECTIONS 7-1.01, 7-1.01.1, AND 8-1.01 OF THE PLACER COUNTY GENERAL SPECIFICATIONS AND THE STATE OF CALIFORNIA STANDARD SPECIFICATIONS DATED JAN. 1, 1978. BEFORE COMMENCING WORK, THE CONTRACTOR SHALL NOTIFY THE PLACER COUNTY DEPARTMENT OF PUBLIC WORKS 48 HOURS IN ADVANCE OF THE TIME OF COMMENCEMENT. CALL AUBURN 823-4575

**DEVELOPER'S RIGHT OF WAY CERTIFICATE**  
I, **L. P. ODENTHAL**, DEVELOPER OF AUBURN VALLEY UNIT No. 2, HEREBY CERTIFY THAT ALL REQUIRED EIGHT OF WAY FOR CONSTRUCTION OF THIS PROJECT INCLUDING CONSTRUCTION PERMITS, WRITTEN CONSENT, AND RIGHTS OF ENTRY SHALL BE ACQUIRED PRIOR TO COMMENCEMENT OF WORK. I WILL HOLD THE COUNTY OF PLACER HARMLESS IN THE EVENT THE ABOVE RIGHTS ARE NOT OBTAINED.  
SIGNED: *L. P. Odenthal*  
DATE: 3/15/77

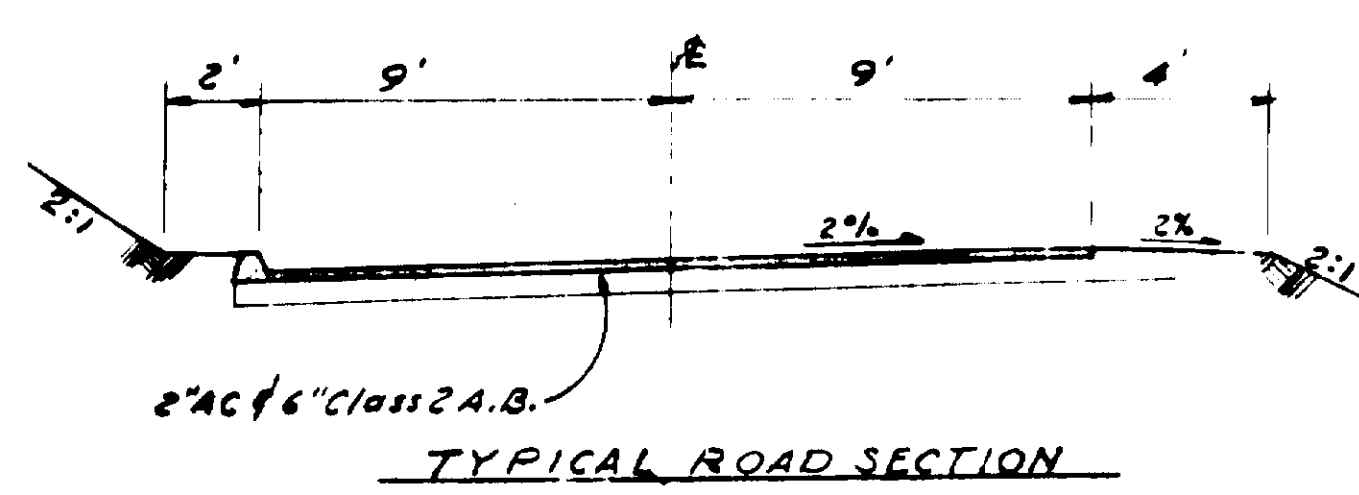
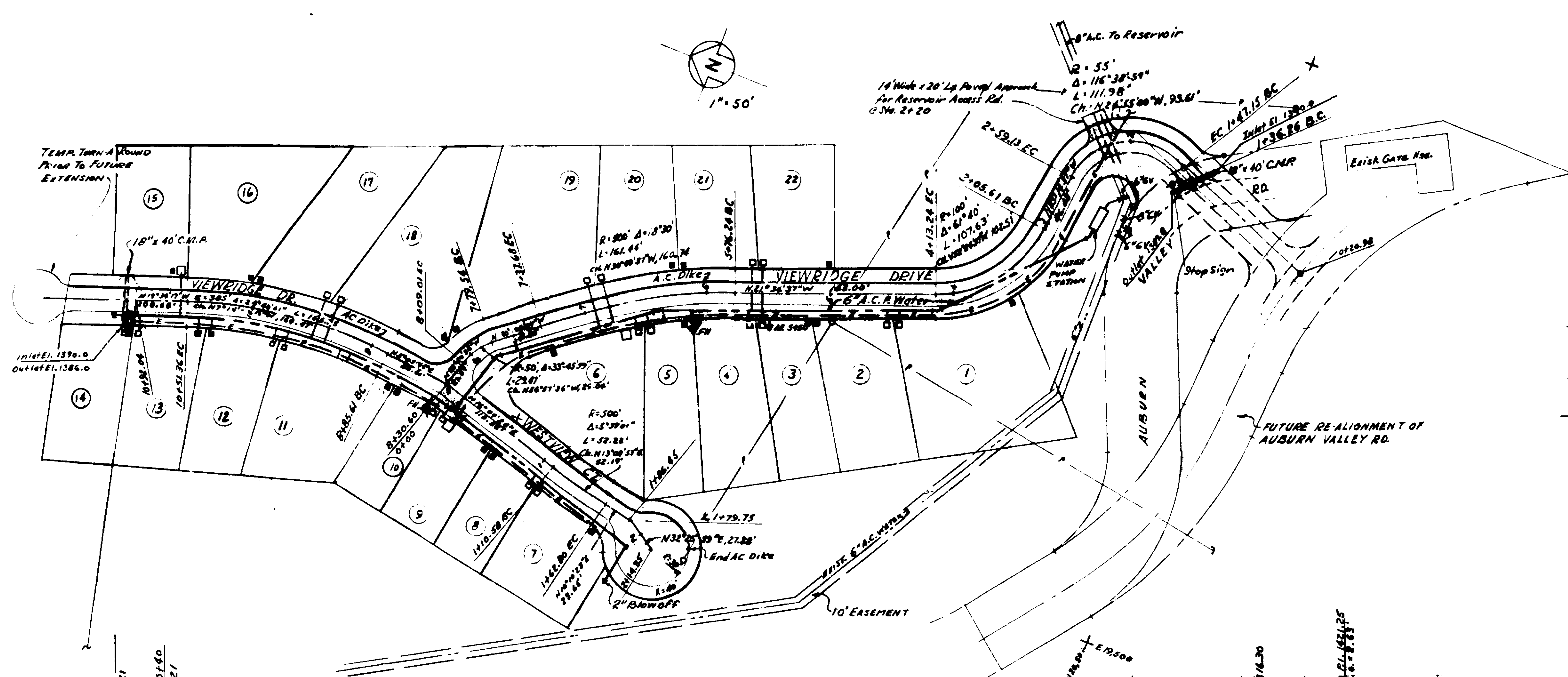
*L. P. Odenthal* 4-19-77  
DIRECTOR OF PUBLIC WORKS  
THIS SIGNATURE IS AN AWARD AND I AGREE THAT THE UNIT IS SUBJECT TO THE PLACER COUNTY STANDARD SPECIFICATIONS BUT DOES NOT IMPLY THAT PLACER COUNTY WILL MAINTAIN OR OTHERWISE ASSURE ANY RESULTS OF THE PROJECT UNDER THESE TERMS.

**NOTE:**  
THE VERTICAL CURVE BETWEEN STATIONS 4+75 & 6+25 ON VIEWRIDGE DR. HAS A DESIGN SPEED OF 20MPH WHICH IS BELOW THE RECOMMENDED MINIMUM OF 25MPH. THE DEVELOPER IS AWARE OF THIS CONDITION AND WILL POST A SPEED LIMIT OF 20MPH AND MAINTAIN CONTINUOUSLY.  
*L. P. Odenthal*  
L. P. ODENTHAL

AUBURN VALLEY SUBDIVISION - UNIT No. 2	
SECTION 1, T.13N.-R.7E.-M.21E.-PLACER COUNTY, CALIF.	
SCALE: AS SHOWN	DATE: 7-1-1977
APPROVED BY: _____	DRAWN BY: _____
REVISION: 3-11-77	CHECKED BY: _____
DRAWING NUMBER COVER SHEET	



A-75-36



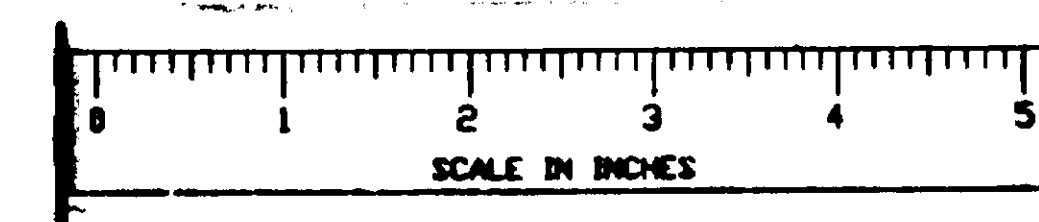
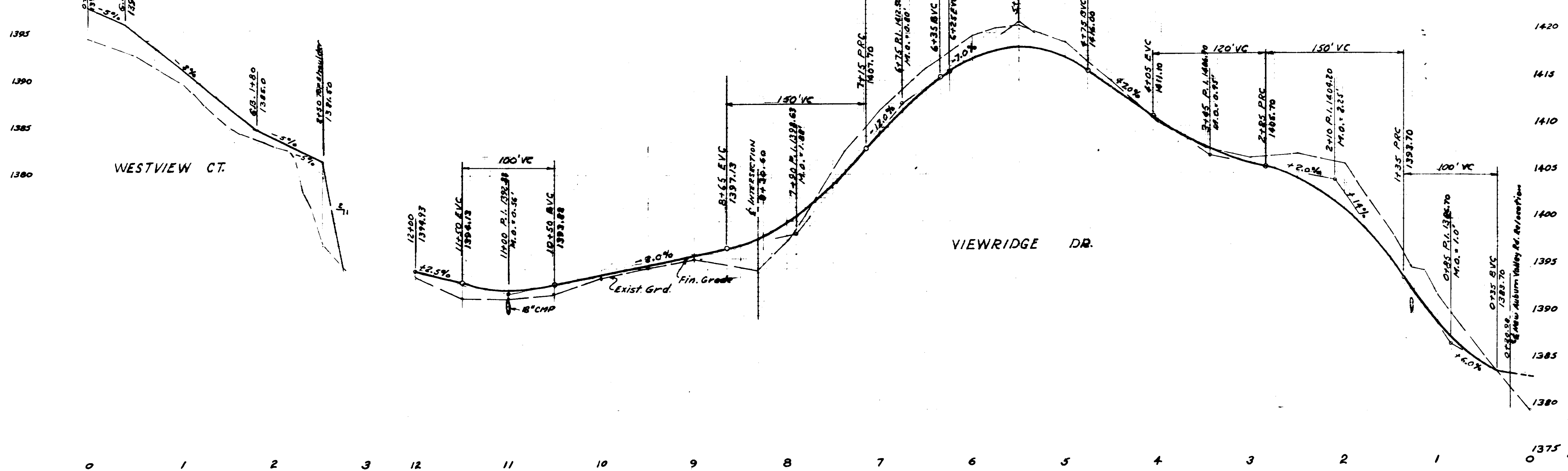
- LEGEND**
- Underground Street
  - AC Paving
  - 6" ACP Water, Class 150 w/2" MC
  - Fire Hydrant
  - Water Service
  - Gate Valve
  - Sewer Manhole
  - Blow-off
  - Air Relief Valve
  - Exist. Overhead Power (To be Relocated)
  - A.C. Dike
  - Underground Street
  - Pull Box
  - Transformer

- NOTES**
1. All Roads are Private.
  2. Fill for Roads shall be Compacted to 90% Max. Density to within 2' of grade & to 85% Max. Density for Upper 2 Feet.
  3. Culverts shall be 16ga. Aluminum.

Δ S-3-77 DIVISION 407 UNITS



IMPROVEMENT PLANS	
AUBURN VALLEY SUBDIVISION - UNIT No. 2	
SCALE: HORIZ. 1" = 50'	APPROVED BY: [Signature]
DATE: 1-11-77	REVISION: 3-11-77
KENNETH M. ALLEN - ENGINEERS	
AUBURN CALIFORNIA	
1 of 6	



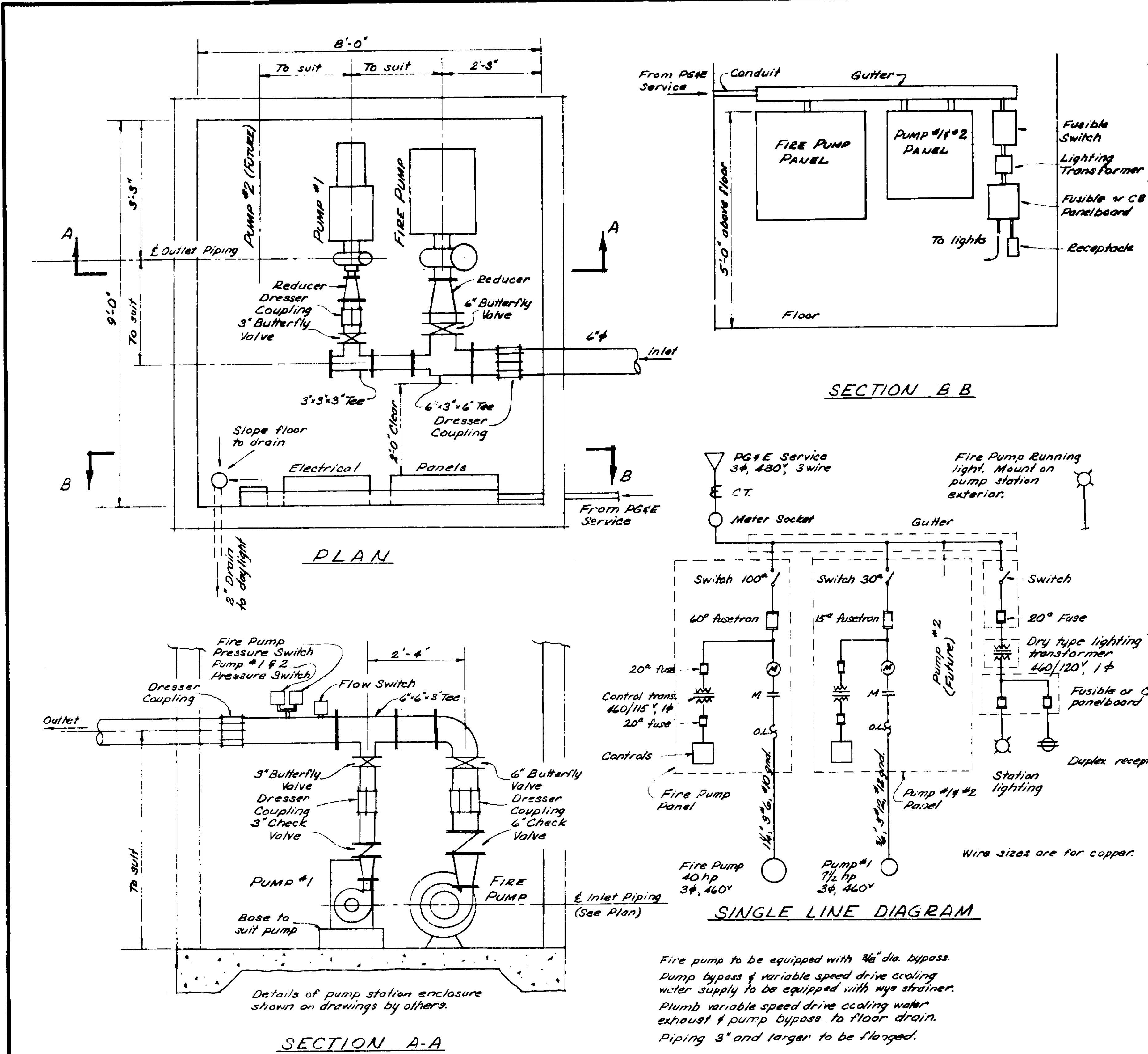
A-15-36





Sub Div Improve. Plan Unit 2

Sub Div Improvement Plan Unit 2



Fire pump to be equipped with 3/4" dia. bypass. Pump bypass & variable speed drive cooling water supply to be equipped with wire strainer. Plumb variable speed drive cooling water exhaust & pump bypass to floor drain. Piping 3" and larger to be flanged.

DESIGN CONDITIONS

- Pump #1 100 GPM @ 130 ft. T.D.H.
- Pump #2 100 GPM @ 130 ft. T.D.H. To be installed in future.
- FIRE PUMP 650 GPM @ 175 ft. T.D.H.

EQUIPMENT

- Pump #1 & 2 Close-coupled centrifugal pump w/variable speed drive: Pump: Fearless Model No. H3373 Variable Speed Drive: Fearless Hydroconstant Type HP (Integral speed control) Motor: 7hp, 3500 rpm drip proof, 3 phase, 460 volt
- Fire Pump Close-coupled centrifugal pump: Pump: Fearless Model C830A Motor: 40hp, 3500 rpm, drip proof, 3 phase, 460 volt
- Pump #1 & 2 Controller: Duplex pump controller for variable speed water booster system. Control type to be additive with manual alternation and lead pump shutdown. Controller to have following features:
  - NEMA 1 single compartment enclosure with back panel, door disconnect switch & space for control equipment.
  - Main disconnect switch.
  - Motor fuses, magnetic starter with three leg overloads and hand-off-auto selector switch. (Fuses, starter, etc. for Pump #2 to be installed in future.)
  - Control transformer with primary and secondary fuses.
  - Numbered terminals for field connections.
  - Additive control: Lead pump started by drop in system pressure. Leg pump started if lead pump cannot maintain system pressure.
  - Manual alternation: Manual selector switch to select lead pump.
  - Lead pump shutdown: Lead pump shutdown on zero flow by flow switch, but only after run length set by minimum run timer.
  - Leg pump shutdown: Flow meter to stop pump when flow drops to lead pump capacity. (Future installation.)
  - Solenoid valves on variable speed drive cooling water to stop cooling water flow when pump stops.
  - Thermal safety valves for pump cooling, self-operating type, 150 psi max. pressure, 1/8" size.
  - Interlock to prevent Pump #1 & 2 from operating when Fire Pump is operating.
  - System pressure switch.
  - Be designed and constructed in accordance with the National Electric Code and the California Electric Safety Orders.

Controller: SYSTEMON variable speed system with Type A power equipment and Type K control system with Options 14c, 17, 18a and 21a. Electric supply: 3 phase, 460 volt. Controls: 115 volt.

Fire Pump Controller

- Single pump controller for constant speed pump. Controller to have following features:
  - NEMA 1 single compartment enclosure with back panel, door disconnect switch & space for control equipment.
  - Main disconnect switch.
  - Motor fuses, magnetic starter with three leg overloads and hand-off-auto selector switch.
  - Control transformer with primary and secondary fuses.
  - Numbered terminals for field connections.
  - Start pump on system pressure drop and stop after minimum run time.
  - System pressure switch.
  - Activates a pump running light on the pump building exterior.
  - Be designed and constructed in accordance with the National Electric Code and the California Electric Safety Orders.

Controller: SYSTEMON basic system with Type A power equipment and Type F-1 control system.

REVISIONS	BY	DATE

JAMES C. HANSON  
CONSULTING CIVIL ENGINEER  
A CORPORATION  
921 ELEVENTH ST., SUITE 400  
SAN FRANCISCO, CALIF. 94103  
(415) 774-1111

AUBURN VALLEY UNIT 2  
WATER PUMP STATION

DATE FEB. 9, 1977  
SCALE 1/4" = 1'-0"  
DRAWN L.C.V.  
JOB AUBURN VALLEY UNIT 2  
SHEET 4 OF 6

A-15-36

